

imprex

THE ORIGINAL PROVIDER
OF TITANIUM TOOLS



LEADING THE INDUSTRY IN
INNOVATION, SELECTION & QUALITY
SINCE 1984

TABLE OF CONTENTS

PAGE 1

ABOUT IMPREX INTERNATIONAL

PAGE 2 - 7

TITANIUM TOOLS

PAGE 8

KITS

PAGE 9 - 11

ALUMINUM BRONZE TOOLS

PAGE 12

OTHER TOOLS

WHY TITANIUM?

Titanium is the only alloy that performs in many of today's high tech applications. Containing no iron, titanium is virtually non-magnetic and non-corrosive, making it perfect for use with acids and alkalis as well as natural, saltwater and marine environments. What's more, titanium is lightweight; with almost 50 percent less weight than standard tools. Titanium is also extraordinarily strong, with superior strength-to-weight ratios to that of stainless and annealed steels, as well as aluminum. Imprex has chosen grade 6AL-4V titanium for its superior application, high quality and durability.

SINCE

1984

AND STILL THE

BEST

INNOVATION, SELECTION AND QUALITY

Since 1984, the most advanced titanium tools available have come from Imprex International. Imprex was the first manufacturer of titanium tools, and we continue to lead the industry in innovation, selection and quality. Our R & D team is continuously developing innovative new manufacturing techniques to keep us your one source for the highest quality titanium products.

TITANIUM

ADJUSTABLE WRENCH

TITANIUM



ITEM #	OVERALL LENGTH
WAT-01	8" (200 mm)
WAT-10-TI	10" (250 mm)

COMBINATION WRENCH

TITANIUM



	ITEM #	SIZE	OVERALL LENGTH
INCHES	CWT-03	3/8"	4 3/8"
	CWT-05	7/16"	5 3/32"
	CWT-07	1/2"	5 7/8"
	CWT-09	9/16"	6 7/16"
	CWT-11	5/8"	7 3/16"
	CWT-13	11/16"	7 3/4"
	CWT-15	3/4"	8 5/8"
	CWT-17	13/16"	9 3/8"
	CWT-19	7/8"	10 1/8"
	CWT-21	15/16"	10 1/2"
MILLIMETERS	CWT-M10	10 mm	4 23/64"
	CWT-M11	11 mm	5 3/32"
	CWT-M12	12 mm	5 27/32"
	CWT-M13	13 mm	6 33/64"
	CWT-M14	14 mm	7 3/8"
	CWT-M15	15 mm	7 3/16"
	CWT-M17	17 mm	7 57/64"
CWT-M19	19 mm	8 41/64"	

OPEN END WRENCH

TITANIUM



	ITEM #	SIZE	OVERALL LENGTH
INCHES	DWT-51	7/32 X 1/4"	3 9/16"
	DWT-53	3/8 X 7/16"	5 1/8"
	DWT-55	1/2 X 9/16"	5 15/16"
	DWT-56	1/2 X 11/16"	6 7/16"
	DWT-58	5/8 X 11/16"	6 11/16"
	DWT-60	3/4 X 25/32"	7 1/8"
	DWT-61	3/4 X 7/8"	7 5/8"
DWT-62	7/8 X 15/16"	7 1/2"	
MILLIMETERS	DWT-00.5-M	5 x 5.5 mm	3 1/4"
	DWT-01-M	6 x 7 mm	3 11/16"
	DWT-02-M	6 x 8 mm	4"
	DWT-04-M	8 x 9 mm	4 7/8"
	DWT-05-M	8 x 10 mm	5"
	DWT-07-M	9 x 11 mm	5 13/64"
	DWT-09-M	10 x 12 mm	4 7/16"
	DWT-10-M	11 x 13 mm	5 3/4"
	DWT-12-M	13 x 15 mm	6 5/16"
	DWT-14-M	14 x 16 mm	6 7/16"
	DWT-18-M	17 x 19 mm	6 15/16"
	DWT-20-M	18 x 20 mm	7 1/8"
	DWT-26-M	21 x 22 mm	7 5/8"
	DWT-27-M	22 x 24 mm	7 7/8"
	DWT-29-M	24 x 27 mm	8 13/16"
	DWT-30-M	26 x 29 mm	9 13/16"
	DWT-31-M	27 x 30 mm	10 1/8"
DWT-35-M	30 x 32 mm	10 7/8"	
DWT-36-M	28 x 36 mm	10 5/8"	
DWT-37-M	32 x 36 mm	10 13/16"	

HEX KEY WRENCH

TITANIUM



ITEM # HEX SIZE LONG LEG SHORT LEG

INCHES

AWT-01	0.05"	1 7/8"	5/8"
AWT-02	1/16"	2"	3/4"
AWT-03	5/64"	2 1/16"	13/16"
AWT-04	3/32"	2 1/4"	7/8"
AWT-05	7/64"	2 3/8"	15/16"
AWT-06	1/8"	2 9/16"	1 1/16"
AWT-07	9/64"	2 3/4"	1 3/16"
AWT-08	5/32"	3"	1 5/16"
AWT-09	3/16"	3 5/16"	1 1/2"
AWT-10	7/32"	3 5/8"	1 11/16"
AWT-11	1/4"	4"	1 15/16"
AWT-12	5/16"	4 1/2"	2 3/16"
AWT-13	3/8"	4 15/16"	2 1/2"
AWT-14	7/16"	5 1/4"	2 2/3"
AWT-15	1/2"	6 1/4"	3 5/16"

MILLIMETERS

AWT-49.5-M	1.5 mm	1 15/16"	5/8"
AWT-50-M	2.0 mm	2 1/16"	3/4"
AWT-50.5-M	2.5 mm	2 3/16"	1 3/16"
AWT-51-M	3.0 mm	2 3/8"	1 5/16"
AWT-52-M	4.0 mm	2 1/2"	1 1/16"
AWT-53-M	5.0 mm	2 3/4"	1 1/4"
AWT-54-M	6.0 mm	3 1/8"	1 7/16"
AWT-55-M	7.0 mm	3 1/2"	1 11/16"
AWT-56-M	8.0 mm	3 7/8"	1 15/16"
AWT-57-M	9.0 mm	4 1/4"	2 1/4"
AWT-58-M	10.0 mm	4 7/8"	2 1/2"
AWT-59-M	11.0 mm	5 5/16"	2 7/8"
AWT-60-M	12.0 mm	5 7/8"	3 1/4"
AWT-62-M	14.0 mm	6 1/2"	3 3/4"

W/ PLASTIC T-HANDLE

AWT-09A	3/16"	12"	
AWT-51-A	3 mm	12"	
AWT-52-A	4 mm	12"	
AWT-53-A	5 mm	12"	

HEX KEY WRENCH W/ T-FORMED HANDLE

TITANIUM



ITEM # SIZE

INCHES

HFT-28-S	3/32 X 6"
HFT-28-SL	3/32 X 12"
HFT-29-S	7/64 X 6"
HFT-29-SL	7/64 X 12"
HFT-31-S	9/64 X 6"
HFT-31-SL	9/64 X 12"
HFT-32-SL	5/32 X 12"
HFT-34-S	7/32 X 6"
HFT-34-SL	7/32 X 12"

MILLIMETERS

HFT-02-S	2.5 mm X 6"
HFT-03-S	3.0 mm X 6"
HFT-03-SL	3.0 mm X 12"
HFT-04-S	4.0 mm X 6"
HFT-04-SL	4.0 mm X 12"
HFT-05-S	5.0 mm X 6"
HFT-05-SL	5.0 mm X 12"
HFT-06-S	6.0 mm X 6"
HFT-06-SL	6.0 mm X 12"

HEX KEY WRENCH KITS

TITANIUM



ITEM # SIZE

KIT-HEXINCH-1	.05", 1/6", 5/64", 3/32", 7/64", 1/8", 9/64", 5/32", 3/16", 7/32", 1/4", 5/16", 3/8", 7/16", 1/2"
KIT-HEXMETRIC-1	1.5mm, 2mm, 2.5mm, 3mm, 4mm, 5mm, 6mm, 7mm, 8mm, 9mm, 10mm, 11mm, 12mm, 14mm
KIT-HEXINCH-2	1/16", 5/64", 3/32", 7/64", 1/8", 9/64", 5/32", 3/16", 7/32", 1/4", 5/16", 3/8"
KIT-HEXMETRIC-2	2mm, 2.5mm, 3mm, 4mm, 5mm, 6mm, 8mm

BALL HEX KEY

TITANIUM



	ITEM #	HEX SIZE	LONG LEG	SHORT LEG
INCHES	AWT-30-B	1/8"	4"	7/8"
	AWT-31-B	9/64"	4 1/2"	1"
	AWT-32-B	3/16"	4 3/8"	1 1/8"
	AWT-33-B	7/32"	5 1/4"	1 1/4"
	AWT-34-B	1/4"	5 3/8"	1 1/2"
	AWT-35-B	9/32"	6"	1 3/4"
	AWT-36-B	5/16"	6 7/16"	2"
	AWT-37-B	3/8"	7"	2 1/4"
	AWT-38-B	7/16"	7 5/16"	2 1/2"
MILLIMETERS	AWT-43-B-M	3.0 mm	3 3/4"	1 1/8"
	AWT-44-B-M	4.0 mm	4 3/8"	1 3/8"
	AWT-45-B-M	5.0 mm	5"	1 5/8"
	AWT-46-B-M	6.0 mm	5 3/4"	2 1/8"
	AWT-47-B-M	7.0 mm	6 11/32"	2 3/16"
	AWT-48-B-M	8.0 mm	6 3/4"	2 1/4"
	AWT-49-B-M	9.0 mm	7 1/4"	2 3/8"
	AWT-50-B-M	10.0 mm	7 3/4"	2 1/2"

SCREWDRIVER

TITANIUM



	ITEM #	TIP SIZE	BLADE LENGTH	OVERALL LENGTH
INCHES	SDT-01	3/32"	3"	5 1/4"
	SDT-03	3/32"	6"	8 1/2"
	SDT-05	1/8"	2"	4 1/4"
	SDT-07	1/8"	4"	6 1/4"
	SDT-09	1/8"	6"	8 1/2"
	SDT-10	1/8"	8"	10 1/4"
	SDT-11	1/8"	12"	14 1/4"
	SDT-13	3/16"	4"	7"
	SDT-15	3/16"	6"	9 1/4"
	SDT-16	1/4"	1 1/2"	3 1/2"
	SDT-17	1/4"	3"	6"
	SDT-18	1/4"	5"	8 1/4"
	SDT-19	1/4"	8"	11"
	SDT-21	1/4"	12"	15"
	SDT-23	5/16"	6"	9 1/2"
	SDT-25	3/8"	3"	7 1/2"
	SDT-27	3/8"	6"	9 1/2"
	SDT-28	3/8"	9"	13"
	SDT-30	7/16"	8"	12 1/2"

HEX SCREWDRIVER

TITANIUM



	ITEM #	HEX SIZE	BLADE LENGTH	OVERALL LENGTH
INCHES	HST-01-M	1.0 mm	2"	4 1/2"
	HST-02-M	2.0 mm	2"	4 1/2"
	HST-03-M	3.0 mm	2 1/2"	5"
	HST-04-M	4.0 mm	2 3/4"	6"
	HST-05-M	5.0 mm	3"	6 1/4"
	HST-06-M	6.0 mm	3 1/2"	7"
	HST-07-M	7.0 mm	4"	7 1/2"
	HST-08-M	8.0 mm	4"	7 3/4"
	HST-15-M	5.0 mm	6"	9"

PHILLIPS SCREWDRIVER

TITANIUM



	ITEM #	TIP SIZE	BLADE LENGTH	OVERALL LENGTH
INCHES	SPT-01	#0	3"	5 1/2"
	SPT-02	#1	3"	6 1/4"
	SPT-03	#2	6"	9 1/4"
	SPT-03-S	#2	1 1/2"	3 1/2"
	SPT-04	#3	6"	9 1/2"

TORX SCREWDRIVER

TITANIUM



ITEM #	SIZE
TORX-T10	T10 x 75 mm
TORX-T15	T15 x 75 mm
TORX-T20	T20 x 100 mm
TORX-T25	T25 x 125 mm
TORX-T30	T30 x 150 mm
TORX-T40	T40 x 200 mm

HAMMER BALL PEIN

TITANIUM



ITEM #	SIZE	OVERALL LENGTH
101-1-TI	1 LB	14" (355 mm)

TWEEZERS

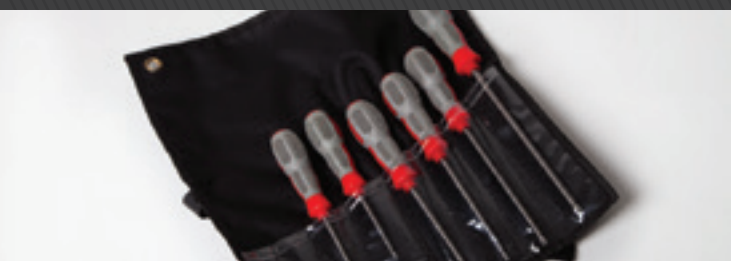
TITANIUM



ITEM #	SIZE
TWT-01	6"

TORX SCREWDRIVER KIT

TITANIUM



ITEM #	HEX SIZE
KIT-TORX	T10, T15, T20, T25, T30, T40 WITH NYLON ROLL

SCALE RULER

TITANIUM



ITEM #	SIZE
RUL-01	6" (150 mm)



SOCKET RATCHET

TITANIUM



ITEM #	SIZE	OVERALL LENGTH
1501-TI	$\frac{3}{8}$ " DRIVE	8" (200 mm)

SPEED HANDLE

TITANIUM



ITEM #	SIZE	OVERALL LENGTH
SHT-03	$\frac{3}{8}$ " DRIVE	12" (300 mm)

EXTENSION BAR

TITANIUM



ITEM #	SIZE	OVERALL LENGTH
1504-4-TI	$\frac{3}{8}$ " DRIVE	4" (100 mm)
1504-8-TI	$\frac{3}{8}$ " DRIVE	8" (200 mm)

SOCKETS

TITANIUM



ITEM #	$\frac{3}{8}$ " DRIVE	LENGTH
SAB-28-TI	$\frac{5}{16}$ "	1"
SAB-29-TI	$\frac{3}{8}$ "	1"
SAB-30-TI	$\frac{7}{16}$ "	1"
SAB-31-TI	$\frac{1}{2}$ "	1 $\frac{1}{4}$ "
SAB-32-TI	$\frac{9}{16}$ "	1 $\frac{1}{4}$ "
SAB-33-TI	$\frac{5}{8}$ "	1 $\frac{1}{4}$ "
SAB-34-TI	$\frac{11}{16}$ "	1 $\frac{1}{4}$ "
SAB-35-TI	$\frac{3}{4}$ "	1 $\frac{1}{4}$ "
SAB-36-TI	$\frac{13}{16}$ "	1 $\frac{1}{4}$ "
SAB-37-TI	$\frac{7}{8}$ "	1 $\frac{1}{4}$ "
SAB-38-TI	1"	1 $\frac{1}{2}$ "
SAB-38A-TI	1 $\frac{1}{16}$ "	1 $\frac{1}{2}$ "
SAB-39-TI	1 $\frac{1}{4}$ "	1 $\frac{1}{2}$ "

ITEM #	MILLIMETERS	LENGTH
SAB-08-B-TI	8 mm	1"
SAB-09-B-TI	9 mm	1"
SAB-10-B-TI	10 mm	1"
SAB-11-B-TI	11 mm	1"
SAB-12-B-TI	12 mm	1"
SAB-13-B-TI	13 mm	1 $\frac{1}{4}$ "
SAB-14-B-TI	14 mm	1 $\frac{1}{4}$ "
SAB-15-B-TI	15 mm	1 $\frac{1}{4}$ "
SAB-16-B-TI	16 mm	1 $\frac{1}{4}$ "
SAB-17-B-A-TI	17 mm	4" (100 mm)
SAB-17-B-TI	17 mm	1 $\frac{1}{4}$ "
SAB-18-B-TI	18 mm	1 $\frac{1}{4}$ "
SAB-19-B-TI	19 mm	1 $\frac{1}{4}$ "

SQUARE DRIVER

TITANIUM



ITEM #	SIZE	BLADE LENGTH	OVERALL LENGTH
SST-20	$\frac{1}{4}$ "	3" (75 mm)	7" (175 mm)

WIRE STRIPPERS

TITANIUM



ITEM #

SIZE

TWC-01

AWG 8, 16, 18, 20, 22, 24

SIDE CUTTERS

TITANIUM



ITEM #

SIZE

SCT-01

5 1/2" (140 mm)

SLIP JOINT PLIERS

TITANIUM



ITEM #

SIZE

TI604-10

10" (250 mm)

NEEDLE NOSE PLIERS

TITANIUM



ITEM #

SIZE

NPT-01

7" (175 mm)

ITEM #	INCLUDES SIZES
ALUMINUM BRONZE KIT-3/8-ALBR-METRIC	SOCKET ($\frac{3}{8}$ " DRIVE) 8 _{mm} , 9 _{mm} , 10 _{mm} , 11 _{mm} , 12 _{mm} , 13 _{mm} , 14 _{mm} , 15 _{mm} , 16 _{mm} , 17 _{mm} , 17 _{mm} (100 _{mm} Long), 18 _{mm} , 19 _{mm} . EXTENSION BAR 4" (100 _{mm} Long), 8" (200 _{mm} Long), RATCHET WRENCH DRIVER, CASE
KIT-3/8-ALBR-INCH	SOCKET ($\frac{3}{8}$ " DRIVE) $\frac{5}{16}$ ", $\frac{3}{8}$ ", $\frac{7}{16}$ ", $\frac{1}{2}$ ", $\frac{9}{16}$ ", $\frac{5}{8}$ ", $\frac{11}{16}$ ", $\frac{3}{4}$ ", $\frac{13}{16}$ ", $\frac{7}{8}$ ", 1", $1\frac{1}{6}$ ", $1\frac{1}{4}$ " EXTENSION BAR 4" (100 _{mm} Long), 8" (200 _{mm} Long), RATCHET WRENCH DRIVER, CASE
TITANIUM KIT-3/8-TI-METRIC	SOCKET ($\frac{3}{8}$ " DRIVE) 8 _{mm} , 9 _{mm} , 10 _{mm} , 11 _{mm} , 12 _{mm} , 13 _{mm} , 14 _{mm} , 15 _{mm} , 16 _{mm} , 17 _{mm} , 17 _{mm} (100 _{mm} Long), 18 _{mm} , 19 _{mm} . EXTENSION BAR 4" (100 _{mm} Long), 8" (200 _{mm} Long), RATCHET WRENCH DRIVER, CASE
KIT-3/8-TI-INCH	SOCKET ($\frac{3}{8}$ " DRIVE) $\frac{5}{16}$ ", $\frac{3}{8}$ ", $\frac{7}{16}$ ", $\frac{1}{2}$ ", $\frac{9}{16}$ ", $\frac{5}{8}$ ", $\frac{11}{16}$ ", $\frac{3}{4}$ ", $\frac{13}{16}$ ", $\frac{7}{8}$ ", 1", $1\frac{1}{6}$ ", $1\frac{1}{4}$ ". EXTENSION BAR 4" (100 _{mm} Long), 8" (200 _{mm} Long), RATCHET WRENCHDRIVER, CASE
KIT-SMS-251	HAND TOOL KIT 32 PIECE SIEMENS BASE. HEX KEY $\frac{1}{16}$ ", $\frac{3}{32}$ ", 2 _{mm} , 2.5 _{mm} , 3 _{mm} , 4 _{mm} , 5 _{mm} , 6 _{mm} , 8 _{mm} , 10 _{mm} . OPEN END WRENCHES 6x7 _{mm} , 8x9 _{mm} , 9x11 _{mm} , 10x12 _{mm} , 13x15 _{mm} , 14x16 _{mm} , 17x19 _{mm} , 18x20 _{mm} , 21x22 _{mm} , 24x27 _{mm} , 30x32 _{mm} , NEEDLE NOSE PLIERS, SIDE CUTTER, SCREWDRIVER $\frac{3}{32}$ "x3", $\frac{1}{8}$ "x6" $\frac{3}{16}$ "x6", $\frac{5}{16}$ "x6", PHILLIPS #1x3", #2x6", #3x6", TWEezer, CASE



ALUMINUM BRONZE

COMBINATION WRENCH

ALUMINUM BRONZE



ITEM # SIZE

INCHES	ITEM #	SIZE
	206-1/2	1/2"
	206-11/16	11/16"
	206-15/16	15/16"
	206-3/4	3/4"
	206-3/8	3/8"
	206-5/16	5/16"
	206-5/8	5/8"
	206-7/16	7/16"
	206-9/16	9/16"
MILLIMETERS	ITEM #	SIZE
	206-M-6	6 mm
	206-M-7	7 mm
	206-M-8	8 mm
	206-M-9	9 mm
	206-M-11	11 mm
	206-M-14	14 mm
	206-M-17	17 mm
	206-M-19	19 mm

OPEN END WRENCH

ALUMINUM BRONZE



ITEM # SIZE

INCHES	ITEM #	SIZE
	203-1/4X5/16	1/4 x 5/16"
	203-7/32X1/4	7/32 x 1/4"
MILLIMETERS	ITEM #	SIZE
	203-6X7	6 x 7 mm
	203-8X9	8 x 9 mm
	203-8X10	8 x 10 mm
	203-12X13	12 x 13 mm
	203-14X15	14 x 15 mm
	203-16X18	16 x 18 mm
OPEN END WRENCH FORK (IN)	ITEM #	SIZE
	205-1.0IN	1"
	205-1-1/8IN	1 1/8"
	205-1-3/16IN	1 3/16"
	205-1-3/8IN	1 3/8"
	205-1-5/8IN	1 5/8"

EXTENSION BAR

ALUMINUM BRONZE

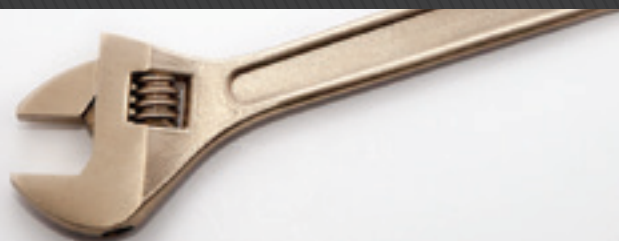


ITEM # SIZE OVERALL LENGTH

INCHES	ITEM #	SIZE	OVERALL LENGTH
	1504-4	3/8" DRIVE	4" (100 mm)
	1504-6	3/8" DRIVE	6" (150 mm)
	1504-8	3/8" DRIVE	8" (200 mm)

ADJUSTABLE WRENCH

ALUMINUM BRONZE



ITEM # SIZE

501-ADJ-8	8" (200 mm)
501-ADJ-10	10" (250 mm)

SOCKETS

ALUMINUM BRONZE



	ITEM #	1/4" DRIVE	OVERALL LENGTH
INCHES	SAB-20	3/16"	1"
	SAB-21	7/32"	1"
	SAB-22	1/4"	1"
	SAB-23	9/32"	1"
	SAB-24	5/16"	1"
	SAB-25	11/32"	1"
	SAB-26	3/8"	1"
	SAB-27	7/16"	1"
MILLIMETERS	SAB-04	4 mm	1"
	SAB-05	5 mm	1"
	SAB-06	6 mm	1"
	SAB-07	7 mm	1"
	SAB-08	8 mm	1"
	SAB-09	9 mm	1"
	SAB-10	10 mm	1"
	SAB-11	11 mm	1"
	SAB-12	12 mm	1"
	SAB-13	13 mm	1"
	SAB-13A	13 mm (X 4")	4" (100 mm)

SOCKETS

ALUMINUM BRONZE



	ITEM #	3/8" DRIVE	OVERALL LENGTH	
INCHES	SAB-28	5/16"	1"	
	SAB-29	3/8"	1"	
	SAB-30	7/16"	1"	
	SAB-31	1/2"	1 1/4"	
	SAB-32	9/16"	1 1/4"	
	SAB-33	5/8"	1 1/4"	
	SAB-34	11/16"	1 1/4"	
	SAB-35	3/4"	1 1/4"	
	SAB-36	13/16"	1 1/4"	
	SAB-37	7/8"	1 1/4"	
	SAB-38	1"	1 1/2"	
	SAB-38A	1 1/16"	1 1/2"	
	SAB-39	1 1/4"	1 1/2"	
	MILLIMETERS	SAB-08-B	8 mm	1"
		SAB-09-B	9 mm	1"
		SAB-10-B	10 mm	1"
		SAB-11-B	11 mm	1"
		SAB-12-B	12 mm	1"
		SAB-13-B	13 mm	1"
SAB-14-B		14 mm	1"	
SAB-15-B		15 mm	1 1/4"	
SAB-16-B		16 mm	1 1/4"	
SAB-17-B		17 mm	1 1/4"	
SAB-17-B-A	17 mm	4" (100 mm)		
SAB-18-B	18 mm	1 1/4"		
SAB-19-B	19 mm	1 1/4"		

SOCKET RATCHET

ALUMINUM BRONZE



ITEM #	SIZE	OVERALL LENGTH
1501	3/8" DRIVE	6" (150 mm)
1501-1/4	1/4" DRIVE	4" (100 mm)

SLIDING T-HANDLE

ALUMINUM BRONZE



ITEM #	SIZE	OVERALL LENGTH
THB-375	3/8" DRIVE	6" (150 mm)

FILE

ALUMINUM BRONZE



ITEM #	SIZE
411-13	13" (330 mm)

HAMMER BALL PEIN

ALUMINUM BRONZE



ITEM #	SIZE	OVERALL LENGTH
101-1	1 LB	14" (355 mm)

UNIVERSAL JOINT

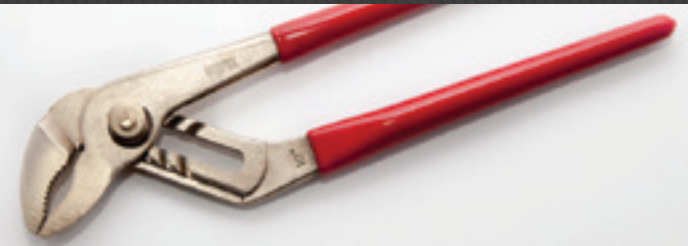
ALUMINUM BRONZE



ITEM #	SIZE
UJB-25	1/4" DRIVE
UJB-375	3/8" DRIVE

SLIP JOINT PLIERS

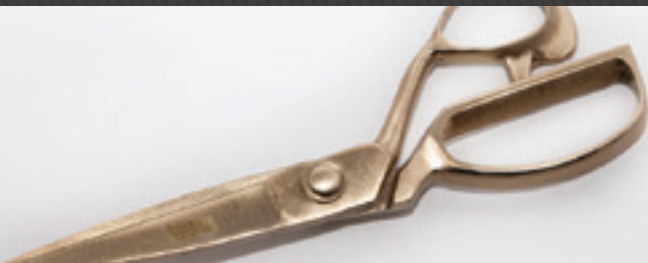
ALUMINUM BRONZE



ITEM #	SIZE
604-10	10" (250 mm)
604-14	15" (380 mm)

SCISSORS

ALUMINUM BRONZE



ITEM #	SIZE
609	9" (225 mm)

INSPECTION MIRROR

STAINLESS STEEL



ITEM #

MIR-01

LEVEL

ALUMINUM



ITEM #

SIZE

LEV-01

12" (300mm)

Imprex products are trusted worldwide in MRI systems, magnetic field engineering, marine situations, clean-room environments and other non-magnetic applications for the following reasons:

FOLDING RULER

FIBERGLASS



ITEM #

SIZE

RID-2M

2 METERS

EXTREMELY LIGHT WEIGHT



Approximately 60% less dense than steel, titanium produces tools that are nearly half the weight of metal.

NON-CORROSIVE



Our tools are highly corrosion resistant, making them ideal for applications involving acids and alkalis.

EXCEPTIONALLY STRONG



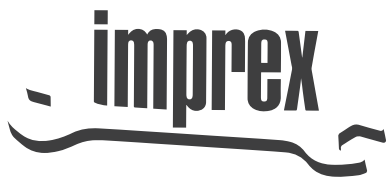
Our tools are extraordinarily strong, with a greater strength-to-weight ratio than stainless and annealed steel or aluminum.

NON-MAGNETIC



Our tools are non-magnetic, and safe to use to service bio-medical and diagnostic imaging machines such as MRI machines.

WWW.IMPRES.NET



IMPRES INTERNATIONAL, INC.

2916 Malmo Road Arlington Heights, IL 60005

PHONE

847-364-4930

PHONE TOLL FREE

800-445-8242

FAX

847-364-4963

EMAIL

sales@impres.net